

Stardust Fair Isle Beanie



Variant 1 **Materials:** approx. 50 g [1.8 oz] MC nature and 50 g [1.8 oz] CC blue sport weight wool yarn **Unisono Atelier Zitron**) (order # 2036, yardage 300 m/100g [328 yds/3.5 oz]); or **Lifestyle Atelier Zitron** (Merino extrafine) (order # 2029, yardage 310 m/100g [340 yds/3.5 oz]); 3mm (UK 11/US 2-3) or 3,5mm(US 4) circular needles 40cm/16in long, and 3mm or 3,5mm DPNs, 1 stitch marker.

Size: One size to fit an average adult head. Finished Size: height: 25cm/10in; circumference: 48cm/19in. If the hat feels to wide/tight use smaller/bigger needles.

Gauge: in colorwork pattern: 28 sts x 32 rows per 10 x 10 cm [4 x 4 in]

Variant 2 **Materials:** approx. 50 g [1.8 oz] MC yellow and 50 g [1.8 oz] CC burgundy. Sock yarn by **Atelier Zitron Trekking XXL** (order # 2010, yardage 420 m/100g [460 yds/3.5 oz]); 2,5mm (US 1.5) and 3mm (UK 11/US 2-3) circular needles 40cm/16in long, and 2,5mm or 3,0mm DPNs, 1 stitch marker.

Size: One size; finished Size: height: 23cm/10in; circumference: 46cm/18in.

Gauge: in colorwork pattern: 35 sts x 38 rows per 10 x 10 cm [4 x 4 in]

Instructions:

All information for **Variant 2** can be found, if different, in brackets in red writing!

Using smaller needles cast on 120 (140) sts with color CC. Join to work in the round be careful not to twist. Place one marker at the beginning of the row. Cut color CC.

Rounds 1-12 (15): work with Color MC in *K2, P2 Rip* Repeat from * to * to the end of the round.

Change to the larger needles. With Color MC and CC work from Chart Rounds 1-37. (For variant 2, if necessary, a rounds additional, to get to the desired cap height) (Repeat 4 (5) x).

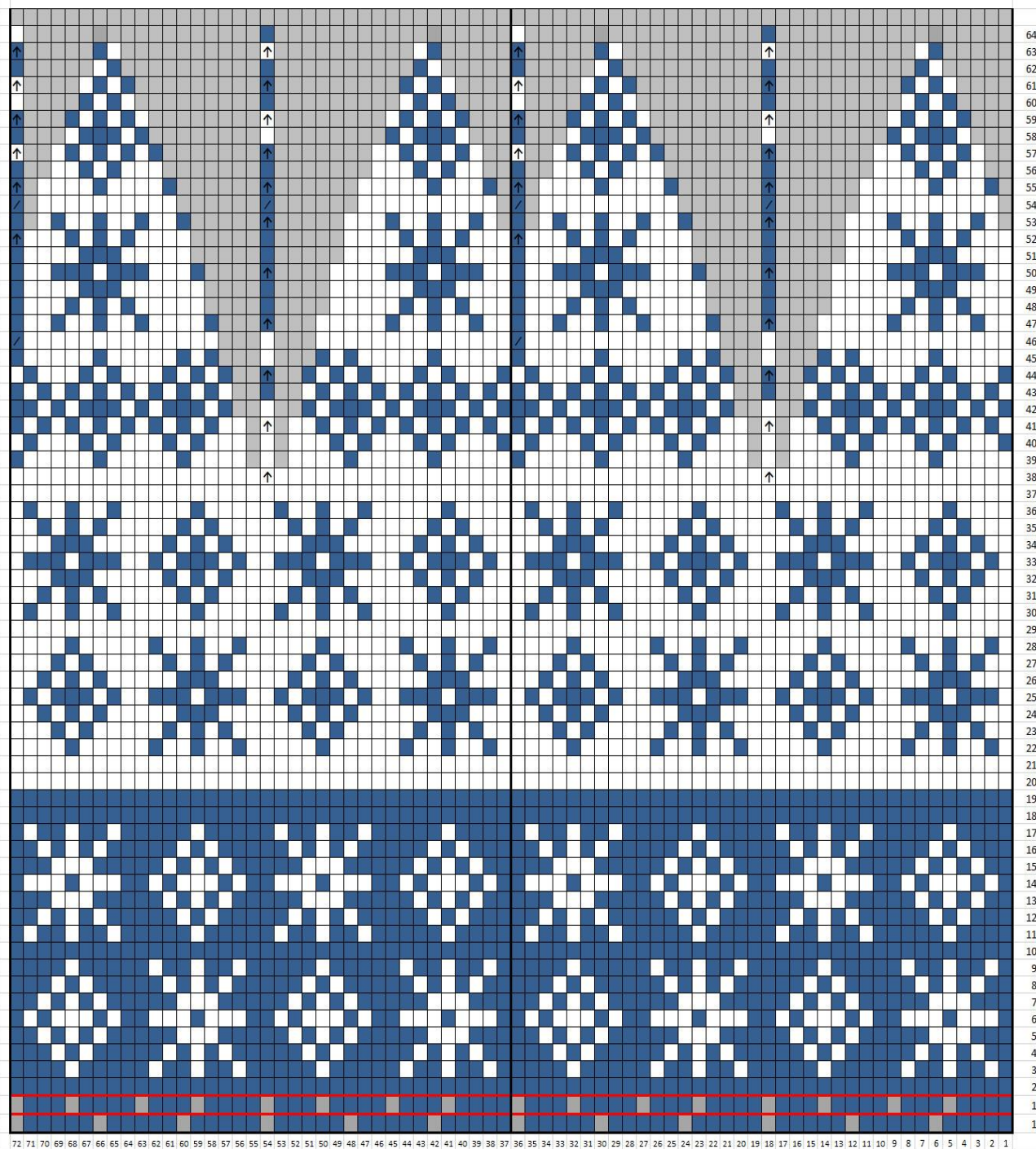
In the 1st or 2nd round, increases as marked in the charts, crossed right. 24x = 144 sts (Variant 2 red framed round (40x = 180 sts). In Round 38 from the charts begin decreasing, knit 3 together where shown, then continue to follow the pattern decreasing where indicated. When the crown becomes too small to work comfortably on the circular needle, switch to DPNs. At the end of the chart, you will have 8 sts remaining. Cut yarn. Use a yarn needle to pull the end through the remaining sts and pull to inside of hat. Weave in ends on inside.



© Wollhandwerk Dela Hausmann 34396 Liebenau, Germany. All rights reserved. www.wollhandwerk.de Our patterns, photographs and illustrations are protected by copyright. Materials are intended for personal use only. Any other use without our express written permission is not allowed.

Design & pattern © 2017 Wollhandwerk – Dela Hausmann – 34396 Liebenau, Germany. All rights reserved.

Stardust Fair Isle Beanie



Rapport/ Repeat 4 (5) x

- 1MA re blau
- 1MA re natur
- keine MA
- ⤴ 1MA wie beim Linksstricken abheben
- ⤴ 2 MA zus abheben, 1 MA re, dann die beiden abgeh. MA überziehen

- 1 st blue
- 1 st natural
- no stitch
- ⤴ slip 1 stitch purlwise
- ⤴ centered double decrease: slip 2 together knitwise, knit 1, pssso



© Wollhandwerk Dela Hausmann 34396 Liebenau, Germany. All rights reserved. www.wollhandwerk.de Our patterns, photographs and illustrations are protected by copyright. Materials are intended for personal use only. Any other use without our express written permission is not allowed.