

Max Knee-Highs



Design & pattern © 2017 Wollhandwerk – Dela Hausmann – 34396 Liebenau, Germany. All rights reserved.

Simply Mosaic-Pattern!

The design for this pair of knee socks is done by pattern changes. The dimensioning extends to the large width, as this would be very suitable for a man.

Materials: each approx. 100 g [3.6 oz] natural, dark blue and gray blue. (sock yarn by Atelier Zitron Trekking 6-ply Sport Trekking 75% Wool

25% Nylon (yardage 390 m/150g [427 yds/5.29 oz]); Set of 5 DPN's 3.0 mm [US 2.5]

Size: 41–47 [US8.0–13.5] The length of the leg and foot are, however, relatively easy to adjust.

Gauge per 10 x 10 cm [4 x 4 in] in mosaic pattern: 29 sts x 39 rows.

Instructions

Cuff: Using DPN set and color dark blue, cast on 84 sts, and divide the sts as follows: 21-21-21-21. Join in a rnd, being careful not to twist sts. Work in k2, p2 ribbing for 35 rnds.

Leg: Work according to **chart 1** rows 1-13. Chart 1 is repeated 14 times on each round = 84sts. Continue with **chart 2** (repeated 5 times on each round), in the 2. round per Needle k2tog = 80sts. Knit A rows 1-30 and repeat rows 3-33 altogether 1 times. In the 32. round per Needle k2tog = 76sts. Continue with **chart 3** row 1-17 (repeated 10 times on each round), in the 2. and 16. round per Needle k2tog = 68sts. Continue with **chart 4** row 1-13 (repeated 10 times on each round), in the 2. And 12. round per Needle k2tog = 60sts. Work according to **chart 3** rows 1-17 (repeated 10 times on each round), and **chart 5** rows 1-41 (repeated 5 times on each round). Start the heel flap after Round 41.

Heel flap:

Worked over 30 sts from Ndl 4 to Ndl 1. Row 1 (WS) slip1, p to end, turn. Row 2 (RS) slip1, *k1, sl1 purlwise; rep from *p1, turn. Work 28 rows, ending with a WS row.

Heel turn:

Row 1 (RS): k17, k2tog, k1, turn.

Row 2: slip 1, p5, p2tog, p1, turn.

Row 3: slip 1, k to 1 st before the gap, k2tog, k1, turn.

Row 4: slip 1, p to 1 st before the gap, p2tog, p1, turn.

Repeat Rows 3 and 4 until all sts are used up. In the last two rounds, knit the remaining two sts together at the end = 18 sts remain.

Gusset: From both side edges of the heel flap, pick up and knit 18 sts = 84 sts. Start with 2 rounds each in color dark blue and nature. Working Rounds 1–35 from **Gusset Chart** = 60 sts. Continue with **chart 5** rows 6- 37 (repeated 5 times on each round) Repeat **chart 5** until the foot is of desired length. Continue until the foot length is approximately 5.5 cm shorter than the desired length.

Toe:

Knit 2 rounds in color dark blue, then in every other round, always k2tog the third- and second-to-last st of Needles #1 and #3, and k2tog the first and second st of Needles 2 and 4, until only 7 sts remain on each needle.

From here on, continue decreases in every round, until only 8 sts remain in all. Thread yarn held double through these remaining sts and cinch, then carefully hide ends.

Work the scnd knee-high the same way.

Chart 1						Chart 3						Chart 4					

Gusset Chart

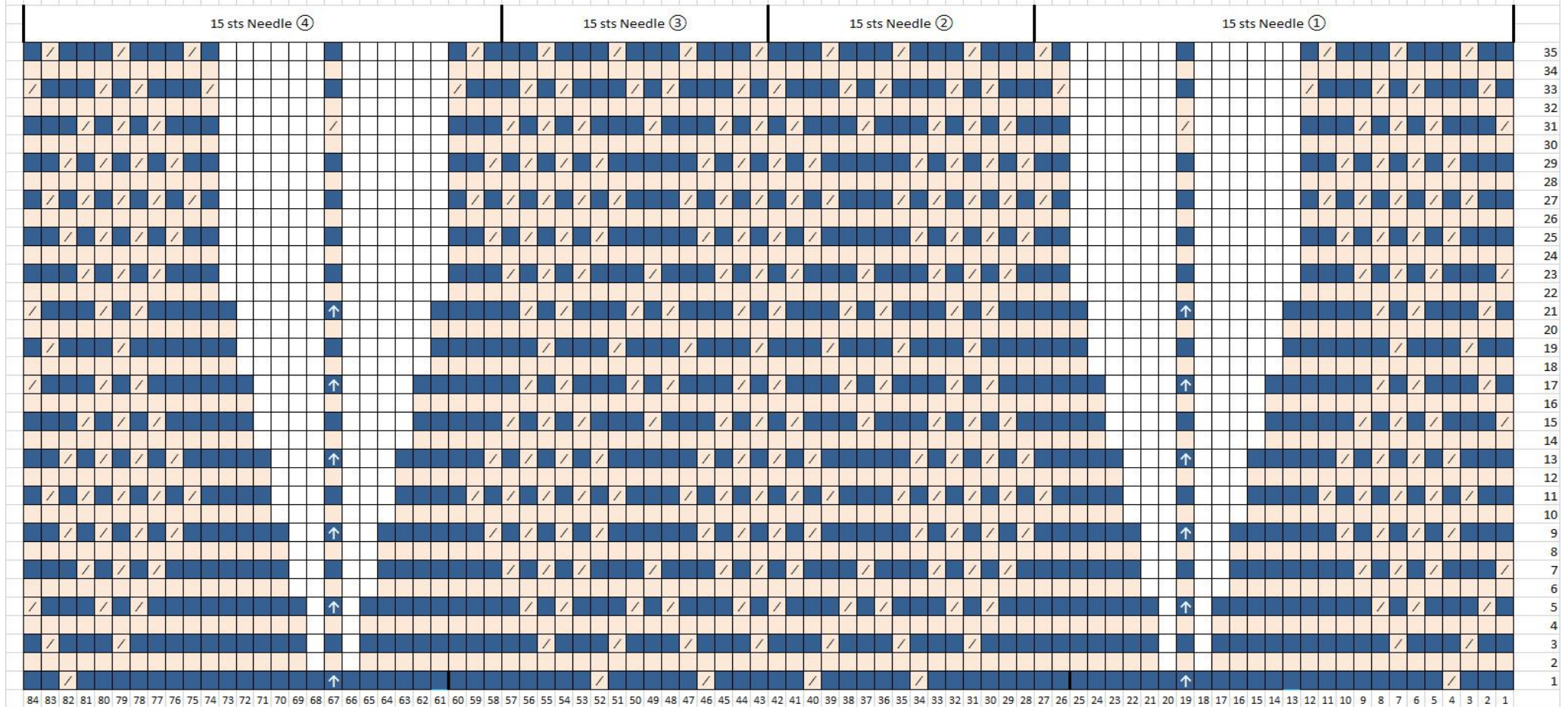


Chart 2																
																33
																32
/		/		/		/		/		/		/		/		31
																30
	/		/		/				/		/		/		/	29
																28
/		/		/					/		/		/		/	27
																26
	/		/						/		/		/		/	25
																24
/		/							/		/		/		/	23
																22
	/								/		/		/		/	21
																20
/									/		/		/		/	19
																18
															/	17
																16
/									/		/		/		/	15
																14
	/								/		/		/		/	13
																12
/		/							/		/		/		/	11
																10
	/		/						/		/		/		/	9
																8
/		/		/					/		/		/		/	7
																6
	/		/		/				/		/		/		/	5
																4
/		/		/		/		/		/		/		/	/	3
																2
																1
16	15	14	13	12	11	10	9	8	7	6	5	4	3	2	1	

Chart 5												
												41
												40
		/					/					39
												38
	/			/			/			/		37
												36
/			/	/			/			/		35
												34
		/	/	/		/			/		/	33
												32
		/	/	/		/			/		/	31
												30
	/	/	/	/		/			/		/	29
												28
		/	/	/		/			/		/	27
												26
		/	/	/		/			/		/	25
												24
/			/	/		/			/		/	23
												22
	/			/		/			/		/	21
												20
/			/	/		/			/		/	19
												18
		/	/	/		/			/		/	17
												16
	/			/		/			/		/	15
												14
/			/	/		/			/		/	13
												12
		/	/	/		/			/		/	11
												10
	/		/	/		/			/		/	9
												8
/			/	/		/			/		/	7
												6
	/			/		/			/		/	5
												4
		/				/			/		/	3
												2
												1
12	11	10	9	8	7	6	5	4	3	2	1	

© Wollhandwerk Dela Hausmann 34396 Liebenau, Germany. All rights reserved. www.wollhandwerk.de

Our patterns, photographs and illustrations are protected by copyright. Materials are intended for personal use only. Any other use without our express written permission is not allowed.



© Wollhandwerk Dela Hausmann
34396 Liebenau, Germany. All rights
reserved. www.wollhandwerk.de

Our patterns, photographs and
illustrations are protected by
copyright. Materials are intended for
personal use only. Any other use
without our express written
permission is not allowed.