

Ginkgo Socks



Materials: approx. 50 g [1.8 oz] color berry and approx. 50 g [1,8 oz] color shades of green (sock yarn by Atelier Zitron Trekking XXL (order # 2010, yardage 420 m/100g [460 yds/3.5 oz]); DPN set 2.5 mm [US1.5] and 3.0 mm [US2.5], 1 stitch marker..

Size: German 37–44 [US5.5–10] **Gauge** per 10 x 10 cm [4 x 4 in] in colorwork pattern: 35 sts x 38 rows.

Instructions

Cuff and Leg: Using DPN set 2.5 mm [US1.5] and color berry, cast on 72 sts, and divide the sts as follows: 18-18-18-18. Join to work in the round be careful not to twist. Place one marker at the beginning of the row. Rounds 1-15: work with Color berry in *K1, P1 Rip* Repeat from * to * to the end of the round.

Change to the bigger DPNs. Continue from the **Chart Leg and Gusset** with color berry and green. Start the heel flap after Round 42.

Heel flap:

Switch to smaller DPNs. Worked with berry and green over 36 sts from Ndl 4 to Ndl 1. Continue from **Chart Heel flap**, working Rows 1–34. Ending with a WS row.

Heel turn:

Row 1 (RS): k21, k2tog green, k1 berry, turn.

Row 2 (WS): slip 1, p1 green, p1 berry (3 times) p1 green, p2tog berry, p1 berry, turn.

Row 3 (RS): slip 1, k1 berry, k1 green...(k to 1 st before the gap), k2tog green, k1 green, turn.

Row 4 (WS): slip 1, p1 berry, p1 green...(p to 1 st before the gap), p2tog berry, p1 berry, turn.

Row 5-14: Repeat Rows 3 and 4 until all sts are used up.

© 2018 Wollhandwerk - Dela Hausmann - 34396 Liebenau

Row 15: In the last row, knit the k2tog the first and second st and remaining two last sts together at the end = 20 sts remain.

Gusset: From both side edges of the heel flap, pick up and knit 18 sts ea and divide the sts as follows: 28-18-18-28 sts. Change to the bigger DPNs. Working Rounds 43–64 from **Chart Leg and Gusset**.

Foot and toe

Continue from the **Chart Foot and toe**. Decreases for the toe for the Gr. 37/38 (39/40, 41/42, 43/44) as marked start in the **85. (90./ 95./ 100.)** Round.

Continue decreases in the charts, until only 12 sts remain in all. Thread yarn held double through these remaining sts and cinch.

Work the scnd sock the same way.

© Wollhandwerk Dela Hausmann 34396 Liebenau, Germany.
All rights reserved.

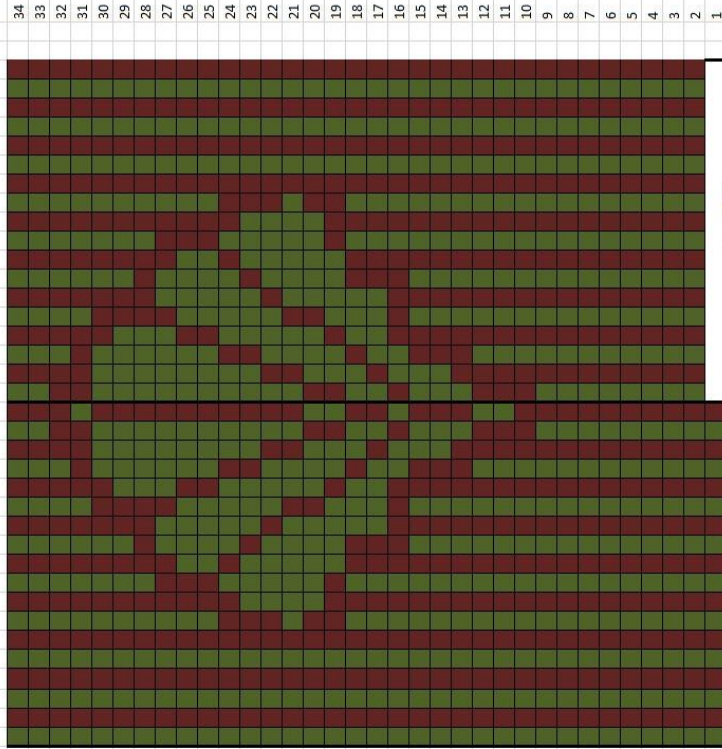
www.wollhandwerk.de

Our patterns, photographs and illustrations are protected by copyright. Materials are intended for personal use only. Any other use without our express written permission is not allowed.

Chart Leg and Gusset / Bein und Zwickel



Chart Heel Flap/ Fersenwand



1 MA Grundfarbe

1 MA Kontrastfarbe

2 MA re zusstricken

1 MA abheben, 1 MA re, die abgeh. MA überziehen

2 MA zus abheben, 1 MA re, dann die beiden abgeh. MA überziehen

Beginn der Spitzenabnahmen:

Rd **85**: für Gr. 37/38; Rd **90**: für Gr. 39/40; Rd **95**: für Gr. 41/42; Rd **100**: für Gr. 43/44

Knit 1 in MC

Knit 1 in CC

k2tog

slip 1, k 1, pssso

centered double decrease: slip 2 together knitwise, knit 1, pssso

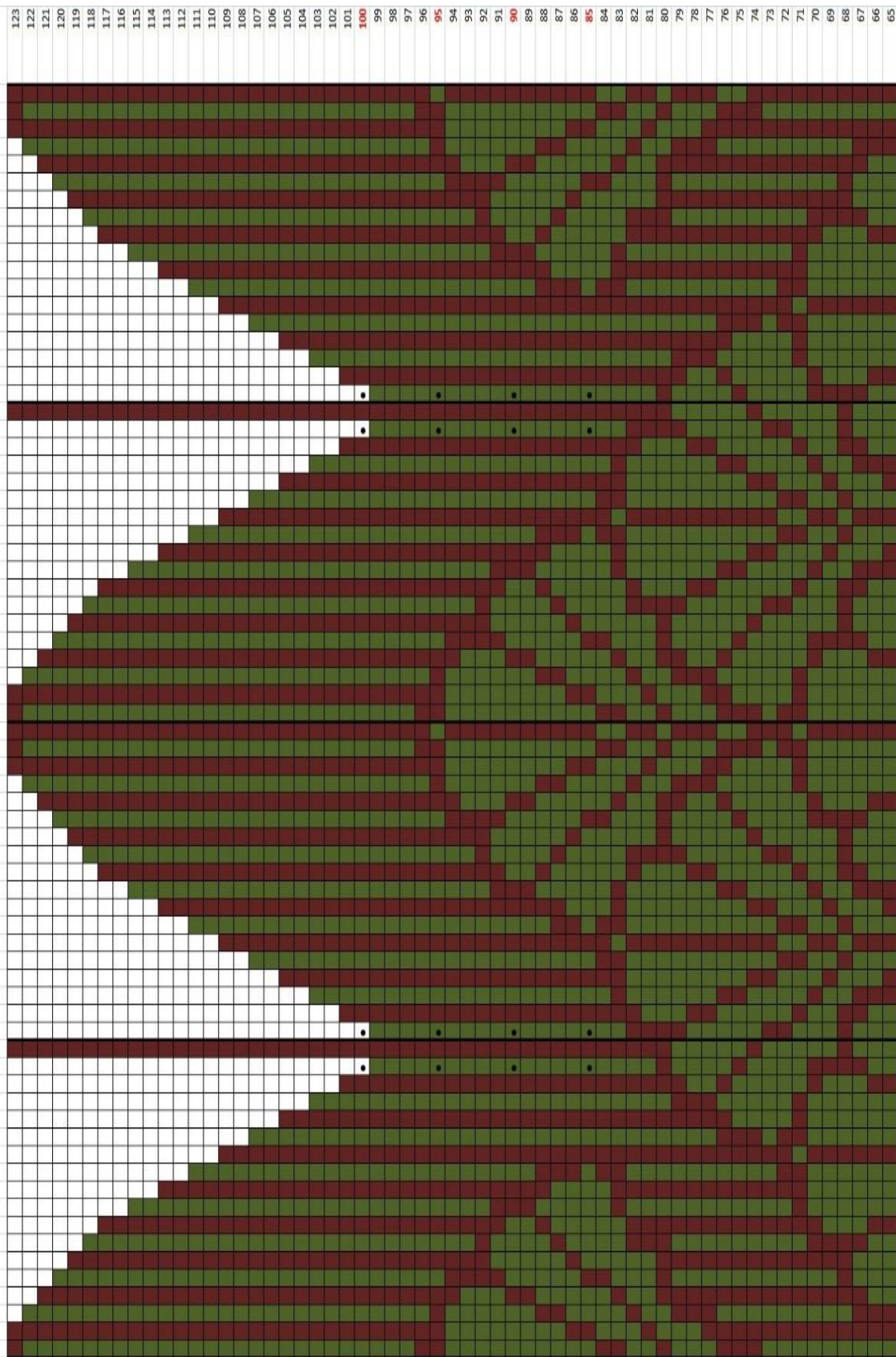
Start of the Toe:

Round **85**: for the size 37/38; Rd **90**: 39/40; Rd **95**: 41/42; Rd **100**: 43/44

Nadel 1

Nadel 4

Chart Foot and Toe / Fuß und Spitze





© Wollhandwerk Dela Hausmann 34396 Liebenau, Germany. All rights reserved.

www.wollhandwerk.de

Our patterns, photographs and illustrations are protected by copyright. Materials are intended for personal use only. Any other use without our express written permission is not allowed.