

Ginkgo Mitts



Materials: fingering weight yarn, such as main color Schoppel-Wolle Zauberball (yardage 420 m/100g [460 yds/3.5 oz]) 35 g [1.2 oz], and Trekking XXL by Atelier Zitron (order # 2010, yardage 420 m/100g [460 yds/3.5 oz]), color pink 35 g [1.2 oz], and DPN set 2.0 mm [US0] or 2.5 mm [US1.5].

Finished size: One-Size only. Hand circumference above thumb: 18cm/8in, Length: 26.5cm/10.4in. Gauge per 10 x 10 cm [4 x 4 in] in colorwork pattern: 34sts x 40rows. By changing the needle size, the size can be varied.

Abbreviations

MC =main color **CC** =contrasting color st(s) =stitch(es) rnd(s) =round(s) k =knit p =purl

Instructions

Hand:

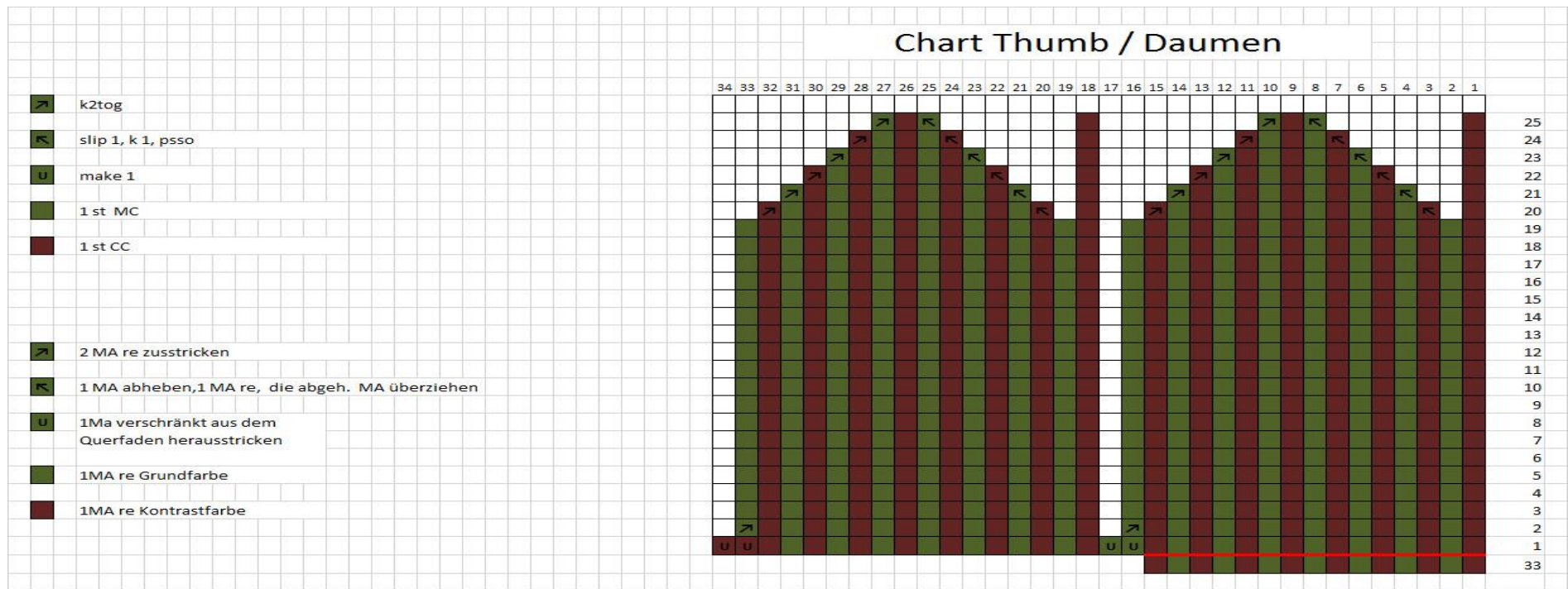
With 2,0mm needles cast 64 sts with color **CC**. Join to work in the round be careful not to twist. Dividing these as follows: 16–16–16–16. Work with Color **CC** in *K1, P1 Rip* Repeat from * to * to the end of the round for 20 rnds.

Change to 2,5mm needles. With Color **MC** and **CC** work from **Chart hand** rnds 1-33. In the second round evenly increase 8 sts = 72sts.

In rnd 34, using a piece of contrasting color auxiliary yarn, work begin of thumb over the area marked with **red lines** (Needle #3 for the right thumb and Needle #4 for the left one). Continue to Round 61, then work fingertip decreases according to chart. With tapestry needle, thread the yarn tail through the remaining 8 sts and secure end.

Thumb: Carefully remove the auxiliary yarn, place freed sts on needle, before the first and third needle pick up and knit 2 stitches in gap between = 34 sts, and work from **Thumb Chart**, working Rounds 1–19, then work thumb tip decreases according to chart. With tapestry needle, thread the yarn tail through the remaining 8 sts and secure end.

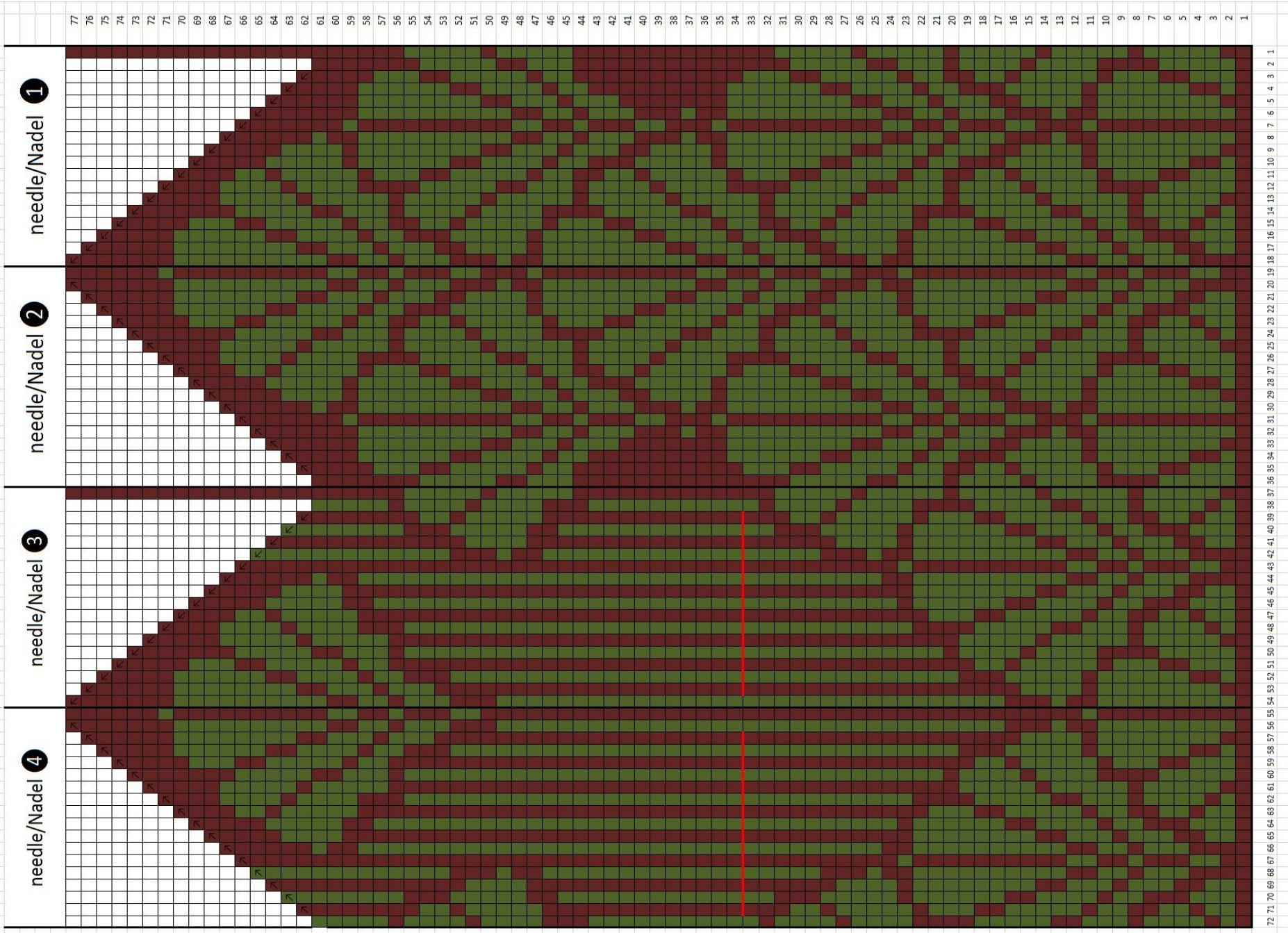
Work the Body of the second mitt the same way, but shift thumb placement as per second **red line** marking. Carefully hide all ends.



© Wollhandwerk * Dela Hausmann * 34396 Liebenau
<http://www.wollhandwerk.de>

Our patterns, photographs and illustrations are protected by copyright. Materials are intended for personal use only.
 Any other use without our express written permission is not allowed.

Chart Hand



© **Wollhandwerk * Dela Hausmann * 34396 Liebenau**

<http://www.wollhandwerk.de>

Our patterns, photographs and illustrations are protected by copyright. Materials are intended for personal use only. Any other use without our express written permission is not allowed.





Design & pattern © 2019 Wollhandwerk – Dela Hausmann – 34396 Liebenau, Germany. All rights reserved.

© Wollhandwerk * Dela Hausmann * 34396 Liebenau

<http://www.wollhandwerk.de>

Our patterns, photographs and illustrations are protected by copyright. Materials are intended for personal use only. Any other use without our express written permission is not allowed