

Ginkgo Hat



Materials: approx. 40 g [1.4 oz] **MC** greens and 40 g [1.4 oz] **CC** berry Sock yarn by **Atelier Zitron Trekking XXL** (order # 2010, yardage 420 m/100g [460 yds/3.5 oz]); 2,5mm (US 1.5) and 3mm (UK 11/US 2-3) circular needles 40cm/16in long, and 2,5mm or 3,0mm DPNs, 1 stitch marker.

Size: One size; finished Size: height: 21cm/8in; circumference: 48cm/19in.

Gauge: in colorwork pattern: 34 sts x 40 rows per 10 x 10 cm [4 x 4 in]

Instructions:

main colour = **MC**, contrasting colour= **CC**

Using smaller needles cast 140 sts with color **CC**. Join to work in the round be careful not to twist. Place one marker at the beginning of the row. Rounds 1-15: work with Color **CC** in *K1, P1 Rip* Repeat from * to * to the end of the round.

Change to the larger needles. With Color **MC** and **CC** work from **Chart** Rounds 1-42. (Repeat 8 x).

In the 2nd round, increases as marked in the charts, crossed right, 52x = 192 sts. In Round 43 from the charts begin decreasing, knit 3 together where shown, then continue to follow the pattern decreasing where indicated. When the crown becomes too small to work comfortably on the circular needle, switch to DPNs. At the end of the chart, you will have 8 sts remaining.

Cut yarn. Use a yarn needle to pull the end through the remaining sts and pull to inside of hat. Weave in ends on inside.



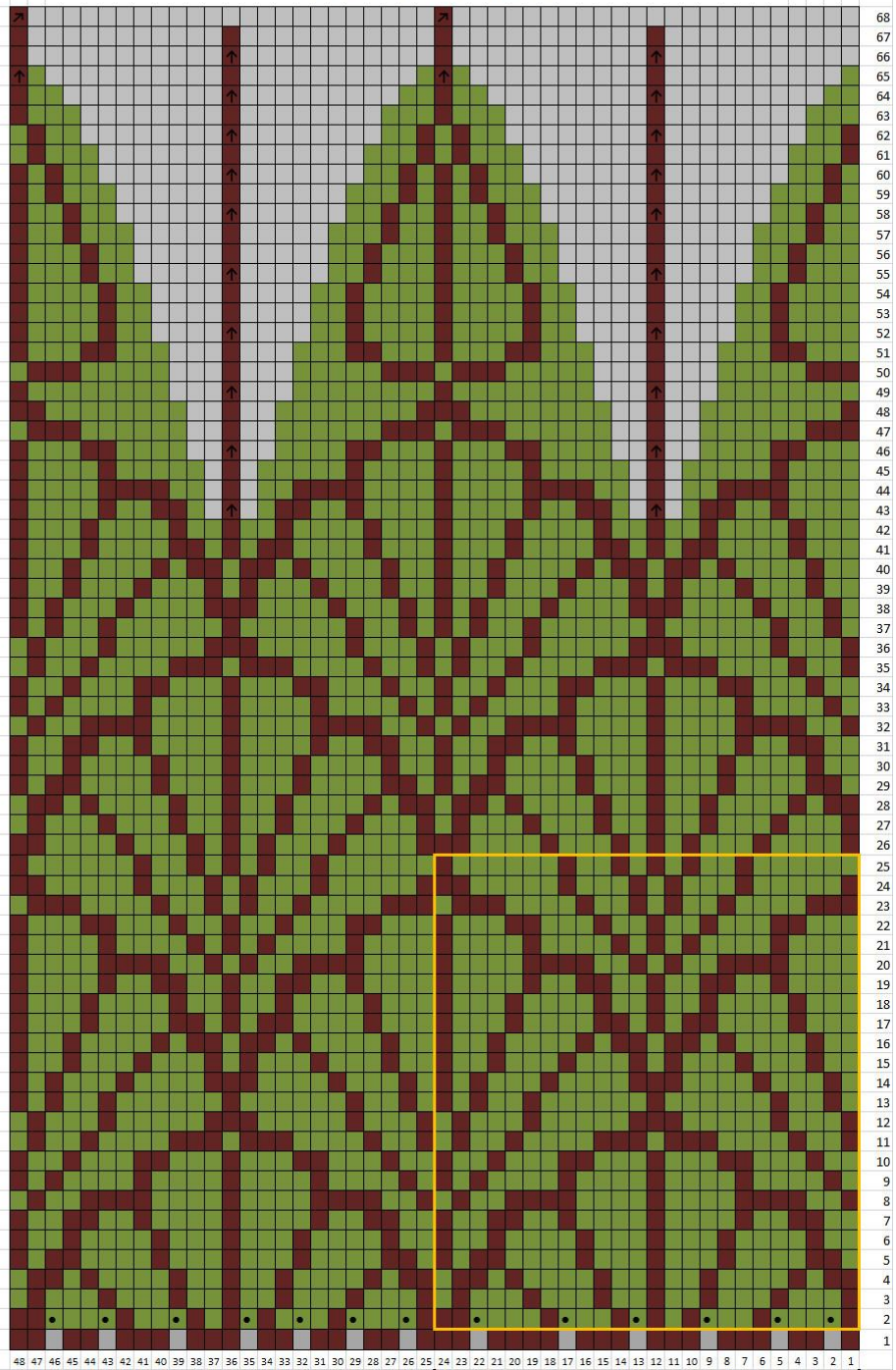


© Wollhandwerk Dela Hausmann 34396 Liebenau, Germany. All rights reserved.

www.wollhandwerk.de

Our patterns, photographs and illustrations are protected by copyright. Materials are intended for personal use only. Any other use without our express written permission is not allowed.

Ginko Hat



Rapport/Repeat 8x = 192 Ma/sts

- | | |
|---|--|
| 1MA re Grundfarbe | 1 st MC |
| 1MA re Kontrastfarbe | 1 st CC |
| keine MA | no stitch |
| 1MA verschränkt aus dem Querfaden herausstricken | make 1 by lifting the bar between two stitches and knitting it through the back loop |
| 2 MA zus abheben, 1 MA re, dann die beiden abgeh. MA überziehen | centered double decrease: slip 2 together knitwise, knit 1, pssso |
| 2 MA re zusstric | k2tog |